



**FOSTER**  
**& CO.**

# St. Francis Close

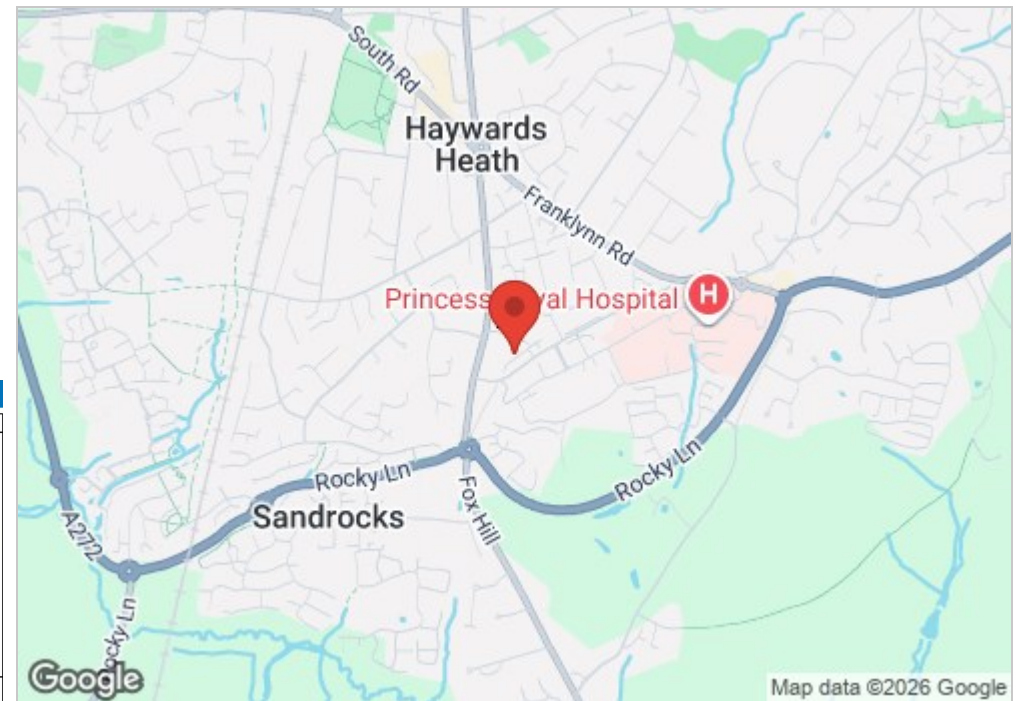
Haywards Heath, RH16 4JP

**Guide price £200,000**

This end terrace house presents an excellent opportunity for first-time buyers seeking a project to make their own. With one reception room, one bedroom and private garden.

While the property is in need of modernisation, this presents a unique chance to personalise the space according to your tastes and preferences. With a little creativity and effort, you can transform this house into a stylish and comfortable home that reflects your individual style.

Situated in a friendly neighbourhood, this property is conveniently located near local amenities, making it an ideal choice for those looking to settle in a welcoming community. Whether you are a first-time buyer or an investor looking for a promising opportunity, this end terrace house in Ifield is certainly worth considering. Embrace the potential and make this house your home.

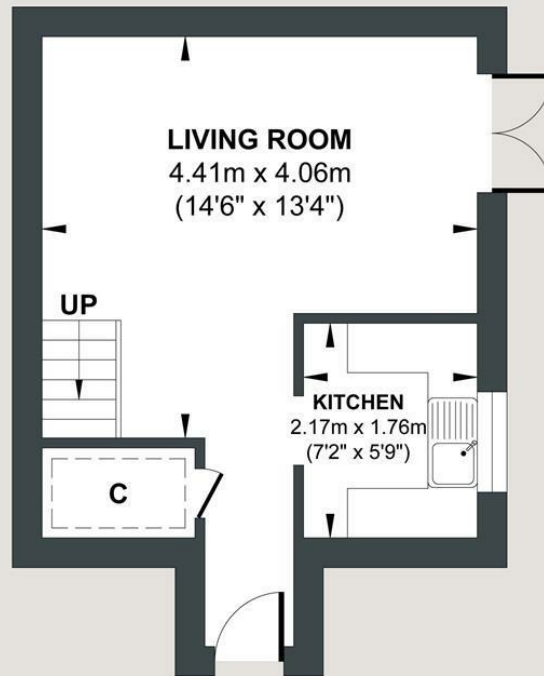


Energy Efficiency Rating		
	Current	Potential
Very energy efficient - lower running costs		
(92 plus) <b>A</b>		
(81-91) <b>B</b>		
(69-80) <b>C</b>		
(55-68) <b>D</b>		
(39-54) <b>E</b>		
(21-38) <b>F</b>		
(1-20) <b>G</b>		
Not energy efficient - higher running costs		
England & Wales		EU Directive 2002/91/EC

# ST FRANCIS CLOSE

Approx. Gross Internal Floor Area = 45.71 sq m / 492.01 sq ft

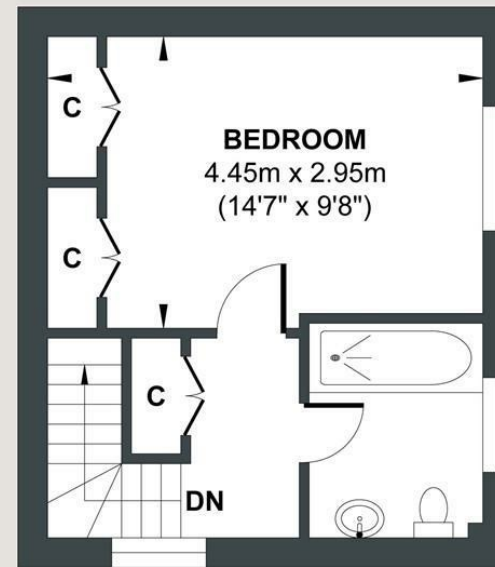
Illustration for identification purposes only, measurements are approximate, not to scale.



GROUND FLOOR

## Approximate Floor Area

251.33 sq ft  
(23.35 sq m)



FIRST FLOOR

## Approximate Floor Area

240.68 sq ft  
(22.36 sq m)



Foster & Co and their clients give notice that:

These sales particulars do not constitute any part of an offer of contract and are for guidance for prospective purchases only and should be not relied upon as a statement of fact.

We are not to be held responsible for material information that has not been given to us by our client at the time of marketing.

All measurements are approximate



